



Eclipse Module
315-325W

BEHIND THE ECLIPSE

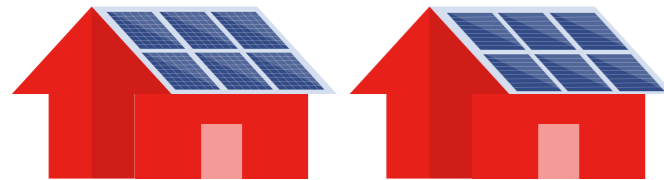
When we began work on this new solar module, we considered every element that defines a perfect solar module — performance, reliability, heat resistance, PID, price and so on. We challenged ourselves to find the best, the most forward-looking way possible, to engineer each one of them. Something radically different from anything before .

As a perfect solar module, our Eclipse solar module meets all of your needs. Innovative module technology utilizes traditional solar cells, increases efficiency, improves reliability and aesthetics, and reduces BOS cost.



Generate 15% More Power and Get More Lifetime Project Returns

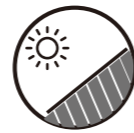
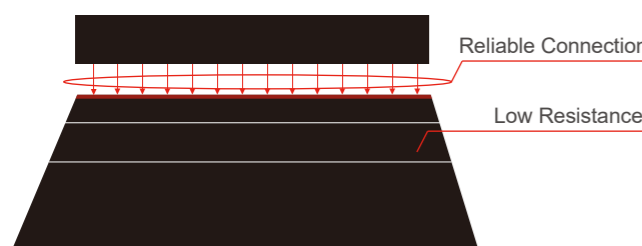
+15%



Reduce System BOS and Installation by up to 10%

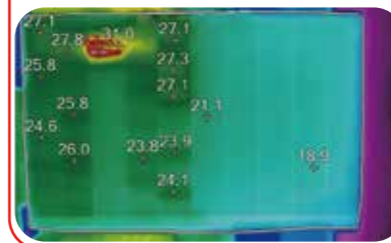


Enhanced Reliability and Durability



Dramatically Reduced Hot Spot Effect

5 Hours Shading Test



Maximum Value **47.3°C**
Average Value **23.9°C**
Minimum Value **15.6°C**

More Benefits

- Better performance when there is external shading
- Fascinating Visual Journey
- 5400Pa Mechanical Load

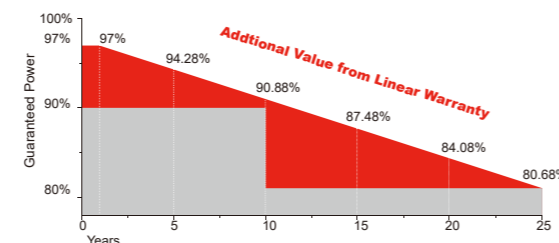
Certifications



Insurances



Warranty



10 YEARS Guarantee on product material and workmanship
25 YEARS linear power output warranty

Electrical Characteristics

	SRP-315-E01B		SRP-320-E01B		SRP-325-E01B	
	STC	NOCT	STC	NOCT	STC	NOCT
Maximum Power (Pmp)	315	233	320	237	325	241
Open Circuit Voltage (Voc)	44.6	41.17	44.85	41.4	45.1	41.63
Short Circuit Current (Isc)	9.02	7.24	9.11	7.32	9.21	7.41
Maximum Power Voltage (Vmp)	36.2	33.93	36.4	34.14	36.6	34.29
Maximum Power Current (Imp)	8.71	6.87	8.80	6.94	8.88	7.03
Module Efficiency at STC(ηm)	18.52		18.81		19.11	
Power Tolerance	(0,+4.99)					
Maximum System Voltage	1000 (TÜV), 1000 (UL)					
Maximum Series Fuse Rating	20A					

STC: Irradiance 1000 W/m² module temperature 25°C AM=1.5;
NOCT: Irradiance 800 W/m² ambient temperature 20°C wind speed :1m/s
Power measurement tolerance: +/-3%

Temperature Characteristics

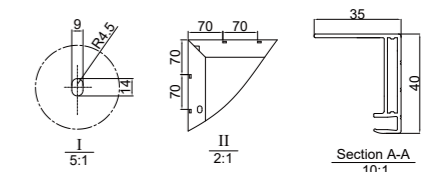
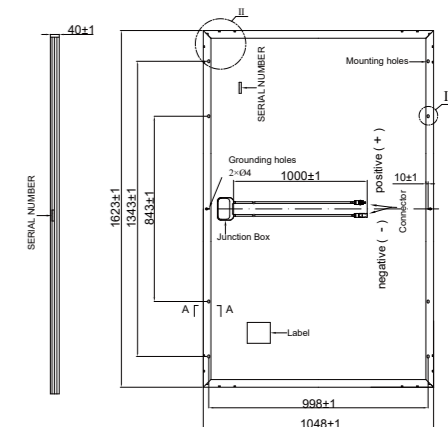
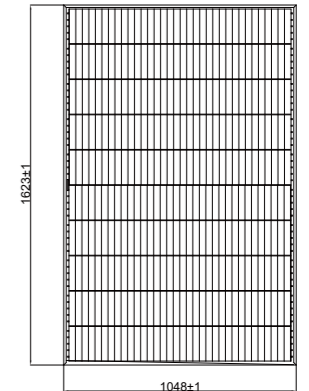
Pmax Temperature Coefficient	-0.40 %/°C
Voc Temperature Coefficient	-0.32 %/°C
Isc Temperature Coefficient	+0.05 %/°C
Operating Temperature	-40 ~ +85 °C
Nominal Operating Cell Temperature (NOCT)	45±2 °C

Mechanical Specifications

External Dimensions	1623x 1048x 40 mm
Weight	19.0 kg
Solar Cells	Mono crystalline
Front Glass	3.2 mm tempered glass, low iron
Frame	Anodized aluminium alloy
Junction Box	IP67
Output Cables	4.0 mm ² ,cable length: 1000 mm
Connector	MC4 Compatible
Mechanical Load	5400 Pa

Packing Configuration

Container	20'GP	40'HGP
Pieces per Pallet	20 per upper pallet; 26 per lower pallet	26
Pallets per Container	12	28
Pieces per Container	276	728



I-V Curve (SRP-315-E01B)

